

**Fall 2024 Sonoma State Symphony Orchestra and Wind Ensemble Audition packet:
Bassoon**

Auditions consist of scales and excerpts, as follows:

Scales: Please prepare your scales according to the instructions on the following page.

Excerpts:

- 1. Dvorak, Symphony No. 9, “From the New World,” movement 4, measures 259-end of movement**
- 2. Shostakovich, Symphony No. 9, end of movement 4 – beginning of movement 5**

Tips on taking a successful audition

If possible, bring all music to a teacher early on (i.e. 1-2 months ahead of the audition) for advice and guidance on appropriate fingering, bowing, breathing, tonguing, practice strategies, etc. In addition, many (free) masterclasses on standard excerpts and audition strategies (how to prepare excerpts, how to deal with nerves, etc.) can be found on Youtube. See for example <https://www.robknopper.com/auditionhacker> and <https://bulletproofmusician.com/>

Get a concrete idea of the appropriate tempi (metronome markings), phrasing, articulations, etc. for your excerpts by listening to recordings. For the Dvorak I recommend [the recent recording by the Concertgebouw Orchestra and Klaus Makela](#). Repeated listenings to this recording (and others) while following along with your part will help you immensely.

Do a “mock audition” (or several mock auditions) by playing through your scales and excerpts in front of others for feedback and to simulate the stress factor of playing in front of other people.

Relax, breathe, and be kind to yourself! Remember that everyone gets nervous before auditions – a little bit of meditation, yoga, and/or positive imagery before the audition will go a long way.

SSU WIND ENSEMBLE/ORCHESTRA AUDITIONS

SCALES

BASSOON

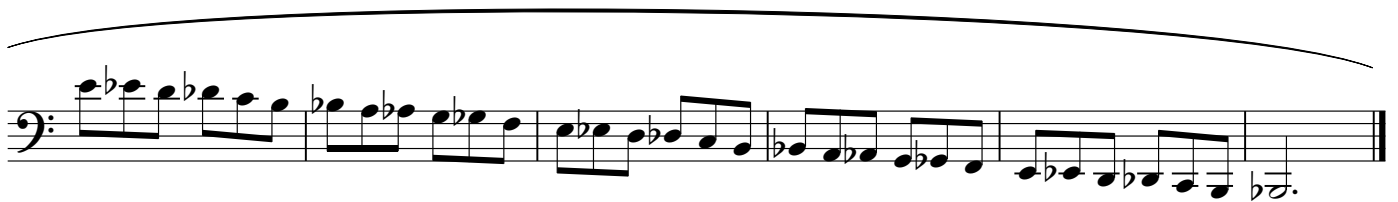
Db Major ♩ = 96



Bb Melodic Minor ♩ = 96



Chromatic ♩ = 96



Excerpt #1 (Dvorak, New World Symphony, numt. 4) 11

FAGOTTO I

259 *Solo*
mf marc.

263 *p stacc.* *p*

267 *poco string.* *ff* *Tempo I.*

277 *fff*

281

289 *fff*

296 *ff* *fz* *fz* *fz* **EX 20**

304 *fff* *dim.* *p* *dim.*

313 *poco a poco rit.* *in tempo* *ff* *Meno mosso e maestoso*

329 *Allegro con fuoco* *fff*

337

342 *lunga cordina* *dim. > ppp*

Excerpt # 2

Symphony No. 9 in E Flat, Op. 70
Dimitri Shostakovich

4

Fagotto I

IV

Largo
Tuba

Trb., Tuba

Cadenza Solo
f espress.

(10) *f* *mf dim.* *p* Trb., Tuba

22 *p* *f* *p cresc.* *f* *p* *attacca*

23 *morendo p* *pp* *pp* *attacca*

V

Allegretto

9

18 **A** 57 Fl.